



- MAKE YOUR BETTA HAPPY AND YOUR TANK BEAUTIFUL WITHOUT GETTING IT WRONG

THE INTENTIONAL BETTA TANK BLUEPRINT

by Shron Thoms

www.fishtanks.store



www.fishtanks.store

WELCOME

THE INTENTIONAL BETTA TANK BLUEPRINT

WELCOME TO THE INTENTIONAL BETTA TANK BLUEPRINT
IF YOU'VE SPENT ANY TIME ONLINE LOOKING AT BETTA TANKS, YOU'VE
PROBABLY NOTICED SOMETHING.

THEY ALL START TO LOOK THE SAME.

HEAVILY PLANTED.

COMPLICATED.

A LITTLE INTIMIDATING.

AND IF YOU'RE NEW — OR JUST WANT SOMETHING DIFFERENT — IT CAN
FEEL LIKE YOU EITHER COPY EVERYONE ELSE... OR RISK GETTING IT
WRONG.

YOU DON'T NEED EXPENSIVE EQUIPMENT.

YOU DON'T NEED CO₂ SYSTEMS.

YOU DON'T NEED TO BECOME AN AQUASCAPING EXPERT.

YOU NEED CLARITY.

YOU NEED A SETUP THAT FEELS INTENTIONAL.

YOU NEED A TANK THAT SUPPORTS YOUR BETTA'S WELLBEING.

AND YOU NEED A DESIGN THAT FEELS LIKE YOU.

THIS BLUEPRINT WAS CREATED TO GIVE YOU EXACTLY THAT.

INSIDE, YOU'LL LEARN HOW TO:

- SET UP YOUR TANK PROPERLY (WITHOUT OVERWHELM)
 - AVOID COMMON BEGINNER MISTAKES
 - KEEP PLANTS SIMPLE AND LOW-STRESS
- CREATE ONE OF SEVEN STYLED TANK WORLDS
- BUILD CALM ROUTINES AND GENTLE BONDING
- ADD MEANING THROUGH THOUGHTFUL NAMING

YOUR TANK DOESN'T HAVE TO LOOK LIKE EVERYONE ELSE'S.

IT JUST NEEDS TO FEEL SAFE, CALM, AND BEAUTIFUL.

LET'S BEGIN.

Sharon

TABLE OF CONTENTS

05-08

SMART SETUP DECISIONS

What you need to know before getting started with your Betta Tank and before buying your fish

09 - 12

THE SIMPLE TANK CYCLE

Explained so you'll understand and get it right includes chart for recording your cycle

13 - 14

LOW STRESS PLANTS

How to incorporate the right easy plants no more plant melt

15 - 29

THE SEVEN SIGNATURE TANK WORLDS

The exact recipe for creating each of the Betta Tank Setups. Create a stunning home for your Betta and an aesthetic that will complement any room in your home



TABLE OF CONTENTS

30 - 34

NAMING WITH MEANING

Suggests authentic Thai names for your Betta and includes the meanings

Naming Certificate

Official Name Certificate

35 - 37

BONDING AND ENRICHMENT

Shows how to bond with your Betta by taking a little time, consistently and fun DIY projects to make bonding even more enjoyable

38 - 45

YOUR FIRST WEEK

Covers how your first week will go with your Betta getting comfortable in it's new home

46 - 48

ENCOURAGEMENT AND BONUS

Words of encouragement, along with a special bonus





CHAPTER 1

TIPS FOR YOUR BETTA TANK

Before you get started on your journey, creating an intentional space for your Betta Fish, it's important you understand it takes time to have the tank and water ready. All fish need a cycled tank, no matter what anyone tells you. Rivers are cycled, oceans are too and so will be your Betta Tank. This can take up to 4 weeks so please be aware.



1. SMART SETUP DECISIONS THAT MOST PEOPLE OVERLOOK

Choose Your Tank Location Carefully

Where you place your tank matters more than most people realise.

Avoid:

- Direct sunlight
- Window ledges
- Heating vents
- Drafty areas

Direct sun may seem harmless — but it can:

- Spike water temperature
- Cause rapid algae growth
- Increase evaporation

A stable, indirect-light location helps keep maintenance low and your betta comfortable.

2. Bigger Tanks Are Easier (Not Harder)

Many bettas are sold in small cups — but that doesn't mean they thrive in tiny tanks.

While 5 gallons is considered a practical minimum, 10 gallons provides:

Space to place equipment such as filter and heater

Room to add additional fish a little later
More room for your Betta Fish to swim

Larger tanks are often more forgiving for beginners.

If budget is a concern, consider checking:

- Facebook Marketplace
 - Local classifieds
 - Community groups

You can often find excellent tanks at a fraction of retail price.

3. Choosing A Healthy Betta

When selecting your betta, look for:

- ✓ Active movement
- ✓ Curious behaviour
- ✓ Fins held open (not clamped tight)
 - ✓ Clear eyes
 - ✓ Smooth body scales

Avoid fish that:

- Remain motionless at the bottom
 - Have heavily clamped fins
 - Appear lethargic

While rescuing sick fish is admirable, beginners may find recovery challenging.

Starting with a healthy fish sets you up for success.

Long-fin varieties are beautiful but may require:

- Lower flow
- Extra resting spots

Plakat bettas are typically more active and swim more freely.

Choose the type that fits your lifestyle and aesthetic preference.

Chapter 2

The Simple Nitrogen Cycle (Without the Confusion)

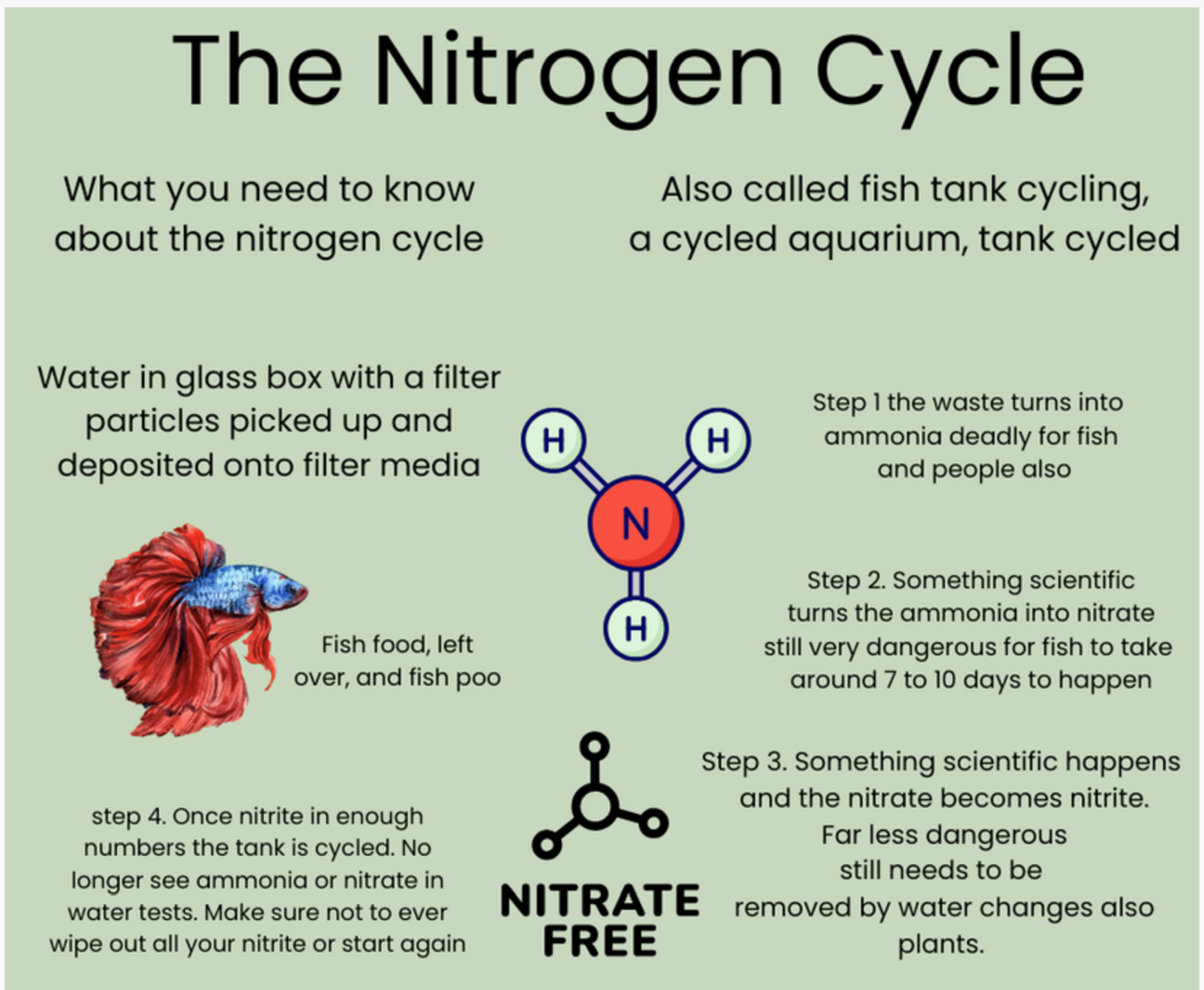
Before adding your betta, your tank needs to build beneficial bacteria. These invisible bacteria convert waste into safer compounds.

Without them, ammonia builds up — and that's what harms fish.

The good news?

It's simple when you understand the flow.

Visual Flow Chart



This process usually takes 3 to 4 weeks.

The Nitrogen Cycle Explained

I know it seems confusing but all you need to know to get this process right is that

1. It takes a few weeks for the good bacteria to turn the ammonia into nitrite and then for the nitrite to turn it into less poisonous nitrate.
2. Until the tank is cycled and turning all the bad stuff into nitrate the tank is dangerous for a fish.
3. If you bought your fish before you cycled your tank, here is what you need to do.

Bought Fish Before Tank Cycled

1. Buy some test strips or a full water testing kit. The strips are fine. Dip the strip in the water quickly and wait for the result.
2. If it shows there are both nitrites and nitrates, usually the first two boxes, and normally, how dark pink tells you how dangerous.
3. If the test shows nitrates, that means the ammonia is being changed to nitrate, but there still aren't enough nitrites yet to make the water safe. At this stage, you can assume you also have high ammonia but the strips don't show ammonia. That's ok because they show nitrates, and they are nearly as bad so we go from that.
4. While nitrates are showing, all you can do is water changes to get rid of them.
5. Change half the water add de-chlorinator
6. Feed lightly so less waste to be converted
7. Test daily, water change daily, until the day you have zero nitrate. Congratulations. Your tank is now cycled.
8. The bacteria mostly live in the filter. They look like brown gunk. Clean your filter as little as possible. When you clean only rinse the filter media in a bucket of tank water quickly. 10

The Nitrogen Cycle Tracker

Day	Ammonia	Nitrate	Nitrite	Notes
1				
2				
3				
4				
5				
6				
7				
8				
9				
10				
11				
12				
13				
14				11

The Nitrogen Cycle Tracker

Day	Ammonia	Nitrate	Nitrite	Notes
15				
16				
17				
18				
19				
20				
21				
22				
23				
24				
25				
26				
27				
28				

Chapter 3

Low Stress Plants

When it comes to plants, my advice is to stick with 2 main plants. Forget the rest. The reason is that stem plants are difficult to grow well. They mostly require co2 systems, special lighting, special substrate and that adds up to lots of money, time and effort.

The plants we suggest are Anubias and Java Fern. Any type is fine on wood or left for you to tie to wood or rocks yourself. These 2 plants are super easy to grow and keep alive. Require little more than a splash of fertiliser every second week.

Moss balls and floating plants like Frog Bit and Red Root Floaters are also great choices

Your Notes



A small world can still feel intentional



CHAPTER 4

THEME PAGES FOR BETTA TANK SETUP

Get ready to design your dream Betta Themed Aquarium without the need for heavily planted layouts. These themes have been designed to create a stunning aesthetic for your Betta Fish Tank.

There are 7 to choose from. You can start with one, and change to others many times during the year. Bettas love to have an interesting and beautiful home. They are more than happy to explore a new setup as many times as you are happy to create one for them.

CRIMSON REFLECTION

Moody. Elegant. Calm. Depth

A deep green backdrop with soft foreground sand that lets your betta become the star. A moss ball adds a place to lounge.



Turquoise #367364



Forest Green #699522



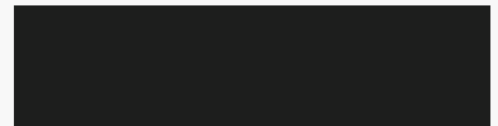
Sand Orange #dba782



Crimson #181611



Black #000000



Crimson reflection

Crimson Reflection creates depth without clutter.

The blurred green background softens reflections and adds a sense of calm, while the sandy foreground gives visual grounding and contrast.

A red betta stands out beautifully against the darker tones — creating a dramatic but peaceful focal point.

This world feels intentional, not crowded.

PLANT PAIRING

BEST PAIRED WITH:

-  ANUBIAS ATTACHED TO DRIFTWOOD
-  JAVA FERN TIED TO ROCK

KEEP LIGHTING MODERATE AND AVOID BURYING PLANT RHIZOMES.

FISH COLOUR MATCH

IDEAL FOR:

- RED BETTAS
- COPPER BETTAS
- METALLIC TONES

MY CRIMSON REFLECTION SETUP

REMEMBER YOUR CHOICES

SUBSTRATE CHOICE: _____

—

PLANT PLACEMENT: _____

BETTA NAME: _____

TEACUP GARDEN

Whimsical. Cozy. Storybook Calm.

A SOFT UNDERWATER COTTAGE WORLD WHERE GENTLE TONES AND CURVED SHAPES CREATE A PEACEFUL, MAGICAL ATMOSPHERE.



Moss Green #8ea527



Grey Green #3e6828



Silver Sand #d6cbbd



Crimson #181611



Black #000000



Tea Cup Garden

Teacup Garden feels like a tiny underwater fairytale. The curved shapes of the cup and mushrooms soften the tank visually, while warm browns and greens create a natural, grounded base.

The dappled light effect adds depth without needing heavy planting.

A deep red or copper betta becomes the perfect storybook hero in this world.

It feels gentle — not busy.

PLANT PAIRING

BEST PAIRED WITH:

-  ANUBIAS ATTACHED TO DRIFTWOOD
-  JAVA FERN TIED TO ROCK

KEEP LIGHTING MODERATE AND AVOID BURYING PLANT RHIZOMES.

FISH COLOUR MATCH

IDEAL FOR:

- RED BETTAS
- COPPER BETTAS
- METALLIC TONES

TEA CUP GARDEN REFLECTION SETUP

REMEMBER YOUR CHOICES

SUBSTRATE CHOICE: _____

—

PLANT PLACEMENT: _____

BETTA NAME: _____

RAINBOW TEMPLE

Bold. Radiant. Main Character Energy.

A vibrant underwater sanctuary where colour and structure create depth without clutter.



Pink Purple #00c4cc



Forest Blue #3b6da7



Yellow Gold #bea027



Light Orange #181611



Jade Green #00bf63



Rainbow Temple transforms your tank into a statement piece.

The structured columns create vertical depth, while layered colour tones add movement without overwhelming the space.



A yellow or koi-pattern betta stands out beautifully against the cooler aqua and stone tones.

This theme feels confident and expressive — without relying on heavy planting.

It's vibrant, but still intentional.

PLANT PAIRING

BEST PAIRED WITH:

  JAVA FERN TIED TO STONE
 A SINGLE ANUBIAS ON DRIFTWOOD
KEEP PLANTING MINIMALLY TO LET THE
ARCHITECTURE SHINE.

FISH COLOUR MATCH

IDEAL FOR:

- YELLOW BETTAS
- KOI-PATTERN BETTAS
- BRIGHT PLAKAT BETTAS

MY RAINBOW TEMPLE SETUP

REMEMBER MY CHOICES

PRIMARY ACCENT COLOUR: _____

COLUMN PLACEMENT IDEA: _____

BETTA NAME: _____

WHAT THIS THEME SAYS ABOUT MY BETTA:

POLAR DREAM

Soft. Dreamlike. Calm Fantasy.

A pastel world of pale pinks and blues where light tones create openness and gentle contrast.



Sandy Beige #dacfc3



Grey Azure #80929d



Musk Pink #d28b9e



Sky Blue #3b8d87



Green #6fb833



POLAR DREAM

Polar Dream creates a light, airy tank environment. The pale pink and blue tones soften the space while subtle sparkle accents add depth without clutter.

A dark blue betta becomes the perfect focal point — standing out beautifully against the gentle backdrop.


This world feels calm, feminine, and visually clean.

It's fantasy — without chaos.

PLANT PAIRING

BEST PAIRED WITH:

 ONE SMALL ANUBIAS ATTACHED TO PALE DRIFTWOOD

 MINIMAL JAVA FERN TUCKED BESIDE ROCK
KEEP THE PLANT PRESENCE SOFT AND SPARSE
TO PRESERVE THE DREAMY ATMOSPHERE.

FISH COLOUR MATCH

IDEAL FOR:

- DEEP BLUE BETTAS
- WHITE BETTAS
- LIGHT PASTEL BETTAS

MY POLAR DREAM SETUP

CHOSEN BETTA COLOUR: _____

SUBSTRATE STYLE: _____

ACCENT DECOR: _____

WHY I LOVE THIS THEME: _____

DIAMONDS & PEARLS

Elegant. Glamorous. Refined Detail.

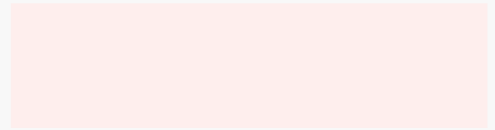
A jewel-toned world where soft shimmer and rich colour create a luxurious focal point.



Pearl #f9f3ca



Palest Pink #feeeca



Musk Pink #ffcdcd



Purple #7a48a7



Burgandy #6fb833



DIAMONDS & PEARLS

Diamonds & Pearls transforms your tank into a refined statement piece.

Layered pinks and purples create warmth, while pearl accents soften the look and prevent visual overload.

A turquoise or green betta stands out beautifully against these jewel tones, becoming the centre of attention without needing heavy decor.

This theme feels curated and intentional — like a styled interior space.

PLANT PAIRING

BEST PAIRED WITH:

 ANUBIAS ATTACHED TO DARKER DRIFTWOOD
 A SINGLE JAVA FERN FOR BALANCE
KEEP GREENERY SUBTLE SO THE COLOUR PALETTE
REMAINS THE FOCUS.

FISH COLOUR MATCH

IDEAL FOR:

- TURQUOISE BETTAS
- GREEN BETTAS
- BI-COLOUR BETTAS

MY DIAMONDS & PEARLS SETUP

CHOSEN BETTA NAME: _____

ACCENT COLOUR FOCUS: _____

SUBSTRATE CHOICE: _____

WHAT MAKES THIS TANK FEEL LUXURIOUS:

EMERALD SANCTUARY

Calm. Natural. Effortlessly Refined.

A lush green-inspired world that feels peaceful and structured — without the complexity of a full planted tank.



Lavender #8c888c



Coral Pink #ff9999



Brown #7f6f44



Lime Green #6fbb33



Green dark green #06b21c



Emerald Sanctuary

Emerald Sanctuary offers the look of a championship aquascape — simplified.

Layered green tones create depth and richness, while white sand and minimal hardscape keep the layout clean and manageable.

This theme delivers the beauty of a planted tank without the ongoing maintenance and equipment demands.

It feels mature, peaceful, and timeless.

PLANT PAIRING

 ANUBIAS ATTACHED TO DRIFTWOOD
 JAVA FERN SECURED TO ROCK
AVOID BURYING RHIZOMES — KEEP PLANTS
ELEVATED FOR HEALTH AND LONGEVITY.

FISH COLOUR MATCH

- RED BETTAS
- ROYAL BLUE BETTAS
- BLACK BETTAS

THESE COLOURS POP BEAUTIFULLY AGAINST DEEP
GREEN TONES.

MY EMERALD SANCTUARY SETUP

DRIFTWOOD PLACEMENT IDEA:

SUBSTRATE CHOICE:

BETTA COLOUR:

WHY I CHOSE THIS THEME:

BLUE MOON STREET

Calm. Natural. Effortlessly Refined.

A surreal streetscape beneath a luminous blue moon — where contrast and colour create depth without clutter.



Azure #438e98



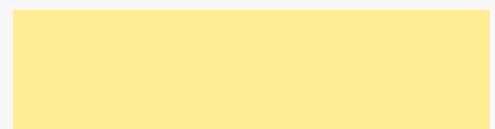
Green #6fb393



Vivid Red #f35942



Light yellow #f3f49a



Buttercup #ff3f49




Blue Moon Street turns your tank into a subtle piece of art.

The oversized moon creates a strong focal point, while red and green accents add contrast and movement.

The open foreground keeps the space balanced and breathable, allowing your betta to become part of the scene rather than competing with it.

This world feels imaginative — but calm.

PLANT PAIRING

ONE ANUBIAS ON DARKER DRIFTWOOD
 A SMALL JAVA FERN TUCKED BESIDE STONE
KEEP GREENERY MINIMAL TO PRESERVE THE
DRAMATIC ATMOSPHERE.

FISH COLOUR MATCH

IDEAL FOR:

- YELLOW BETTAS
- ORANGE BETTAS
- LIGHT-BODIED BETTAS

BRIGHTER FISH COLOURS CONTRAST
BEAUTIFULLY AGAINST THE DEEPER TONES.
OPTIONAL INTERACTIVE SECTION (BOTTOM)

MY BLUE MOON STREET SETUP

CHOSEN FISH COLOUR:

ACCENT FOCUS (RED OR GREEN?):

BETTA NAME: _____

WHY THIS THEME FEELS LIKE ME:



Every world deserves a name.

NAME YOUR BETTA WITH MEANING

Bettas originate from Thailand, where they are known as ปลากัด (Pla Kat) — meaning “biting fish.”

While modern bettas are admired for their beauty and flowing fins, they’ve long been respected for their strength and resilience. Choosing a meaningful name adds intention and connection to your tank design.

Below are Thai-inspired names chosen respectfully to honour their heritage.

Female Names

<i>Name</i>	<i>Thai Spelling</i>	<i>Meaning</i>	<i>Suited to theme</i>
Mali	มะลิ	Jasmine Flower soft gentle energy	Soft, elegant — Polar Dream, Teacup Garden
Suda	สุดา	Beloved Daughter soft gentle energy	Gentle, affectionate — Diamonds & Pearls
Vira	วีระ	Brave bold and confident	Strong personality — Rainbow Temple
Arun	อรุณ	Bold Confident strong dignified	Fiery tones - crimson reflection

MALE NAMES

<i>Name</i>	<i>Thai Spelling</i>	<i>Meaning</i>	<i>Suited to theme</i>
Niran	นิรันดร์	Victory, Winner, Fortunate	Balanced, confident — Blue Moon Street
Dao	ดาว	Star, Energised Cool	Dreamy energy — Polar Dream
Chandra	จันทร์	Victory	The Winner Blue Moon Street
Chai	ชัย	Moon	Balanced, confident — Blue Moon Street

My Bettas Name

I named my Betta

It means

Why I chose it

ON THE NEXT PAGE YOU WILL FIND YOUR OFFICIAL
BETTA NAMING CERTIFICATE

PLEASE USE IT AS A RECORD OF THE DATE THAT YOU
NAMED YOUR BETTA FISH

IT WILL BE A REMINDER FOR YOU OF WHEN YOU GOT
YOUR BETTA FISH. THAT WILL BE IMPORTANT TO
YOU AT TIMES WHEN YOU WANT TO KNOW HOW
OLD YOUR FISH IS.

AND YOU WILL. MAKE SURE TO
FILL IT OUT. PLACE IT IN A FRAME AND CHERISH IT
AS YOU WOULD ANY SPECIAL PETS RECORD THAT YOU LOVE

CERTIFICATE

Of Naming

This certifies that

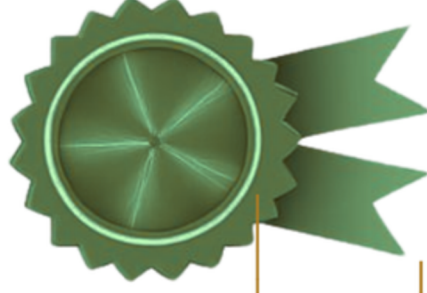
_____ Officially Welcomed and Named

Inspired by _____

Known in Thailand as “Pla Kat”

(ปลา), _____

On this day: _____





A special bond between a girl and fish

How to Make a Simple Training Wand

You don't need anything complicated.

You can use:

- A clean wooden chopstick
- A feeding stick
- Or a smooth bamboo skewer (blunt tip only)

If using a chopstick:

Choose one with a flat end so you can personalise it.

You may decorate the top section only — never the part that goes in the water.

Safe decorating ideas:

- Washi tape on the handle end
- A small ribbon tied above water level
- A written name sealed with clear tape

Do not:

- Paint the water-contact end
- Use glue below the water line
- Add anything that could flake or dissolve

Keep the submerged portion plain and smooth.

BETTA TRAINING TOOLS

To make Betta Wand, Mobile and Rings



Ceramic Modelling Clay

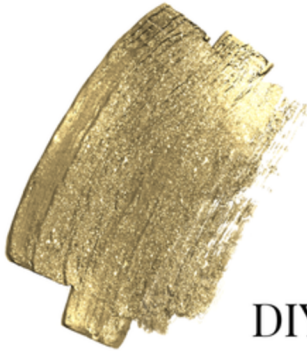


Gold Paint and Thread

Plastic Rings
Wooden Chop Stix



White Paint
Pink Paint



Paint Brush



DIY equipment needed to make training tools

How to Use It

Dip the plain end slightly into the water.
You can gently guide your betta toward one corner.
Reward immediately with a pellet.

Repeat for 2–3 minutes only.

Short sessions are best.

Over time, your betta may begin to approach when they see
the wand.

Keep It Calm

Training should always feel gentle.

*If your betta seems stressed or uninterested, stop and try again
another day.*

Routine builds trust — not speed.

Interactive Section

My Training Cue Time:

How My Betta Responded:

Rest Spot Nearby:



Calm water settles in time.

THE FIRST WEEK: SETTLE, DON'T OVERREACT

THE FIRST FEW DAYS ARE ABOUT ADJUSTMENT — NOT PERFECTION.

YOUR BETTA IS:

- EXPLORING NEW TERRITORY
 - LEARNING WATER FLOW
- ADJUSTING TO LIGHT LEVELS
 - TESTING HIDING SPOTS

SOME BEHAVIOURS THAT ARE NORMAL:

- ✓ HIDING BRIEFLY
- ✓ RESTING MORE THAN EXPECTED
 - ✓ FLARING OCCASIONALLY
 - ✓ EXPLORING CORNERS

THIS DOES NOT MEAN SOMETHING IS WRONG

DAY 1-2

KEEP LIGHTS DIM.

FEED LIGHTLY.

AVOID TAPPING THE GLASS OR CONSTANT INTERACTION.

LET THEM SETTLE.

DAY 3-5

YOU MAY NOTICE:

- INCREASED CURIOSITY
 - EXPLORING MORE LEVELS
 - RECOGNISING FEEDING ROUTINE
- THIS IS A GOOD SIGN.

DAY 6-7

BY THE END OF THE FIRST WEEK:

- SWIMMING PATTERNS STABILISE
 - RESTING SPOTS ARE CHOSEN
 - FEEDING RESPONSE IMPROVES

THIS IS WHEN THE TANK BEGINS TO FEEL LIKE "HOME."

WHEN TO CHECK WATER IMMEDIATELY

IF YOU SEE:

- GASPING AT THE SURFACE CONTINUOUSLY
 - SEVERE LETHARGY
 - CLAMPED FINS + INACTIVITY
 - CLOUDY WATER

TEST WATER PARAMETERS IMMEDIATELY.

STABILITY ALWAYS COMES BEFORE STYLING.

FIRST WEEK NOTES

DAY 1 MOOD

FEEDING RESPONSE:

FAVOURITE REST SPOT:

ANY CONCERNS:

CONTINUE WATCHING YOUR BETTAS
BEHAVIOUR

STABILITY ALWAYS COMES BEFORE STYLING.

FIRST WEEK NOTES

DAY 3 MOOD

FEEDING RESPONSE:

FAVOURITE REST SPOT:

ANY CONCERNS:

CONTINUE WATCHING YOUR BETTAS
BEHAVIOUR

STABILITY ALWAYS COMES BEFORE STYLING.

FIRST WEEK NOTES

DAY 5 MOOD

FEEDING RESPONSE:

FAVOURITE REST SPOT:

ANY CONCERNS:

CONTINUE WATCHING YOUR BETTAS
BEHAVIOUR

STABILITY ALWAYS COMES BEFORE STYLING.

FIRST WEEK NOTES

DAY 7 MOOD

FEEDING RESPONSE:

FAVOURITE REST SPOT:

ANY CONCERNS:



Beauty begins with intention.

YOU'RE DOING BETTER THAN YOU THINK

CREATING A BEAUTIFUL, HEALTHY BETTA TANK DOESN'T REQUIRE EXPENSIVE EQUIPMENT OR COMPLICATED SYSTEMS. IT REQUIRES INTENTION.

YOU'VE NOW LEARNED HOW TO:

- CHOOSE A SAFE SETUP
- CYCLE YOUR TANK PROPERLY
- AVOID PLANT FRUSTRATION
- DESIGN A STYLED WORLD
- BOND WITH YOUR BETTA
- CREATE A CALM, ENRICHED ENVIRONMENT

YOUR TANK DOESN'T NEED TO LOOK LIKE EVERYONE ELSE'S.

IT JUST NEEDS TO FEEL RIGHT FOR YOU — AND SAFE FOR YOUR BETTA.

Blueprint & Log Book Bonus

*As a reader of this guide, you receive:
15% off matching betta tank backgrounds.*

*Use code:
Bettablue15
Valid for small tank sizes.*

*A small tank.
A calm world.
A happy betta.*

*I sincerely hope you enjoyed learning
about creating the perfect home for your
Betta Fish. I bet the aesthetic of your tank
is incredible and we'd love to see photos or
video. If you'd like to share them with us
please email them to
thetreasurevaults@gmail.com*

Thanks for purchasing our Blueprint

Shaton Thoms